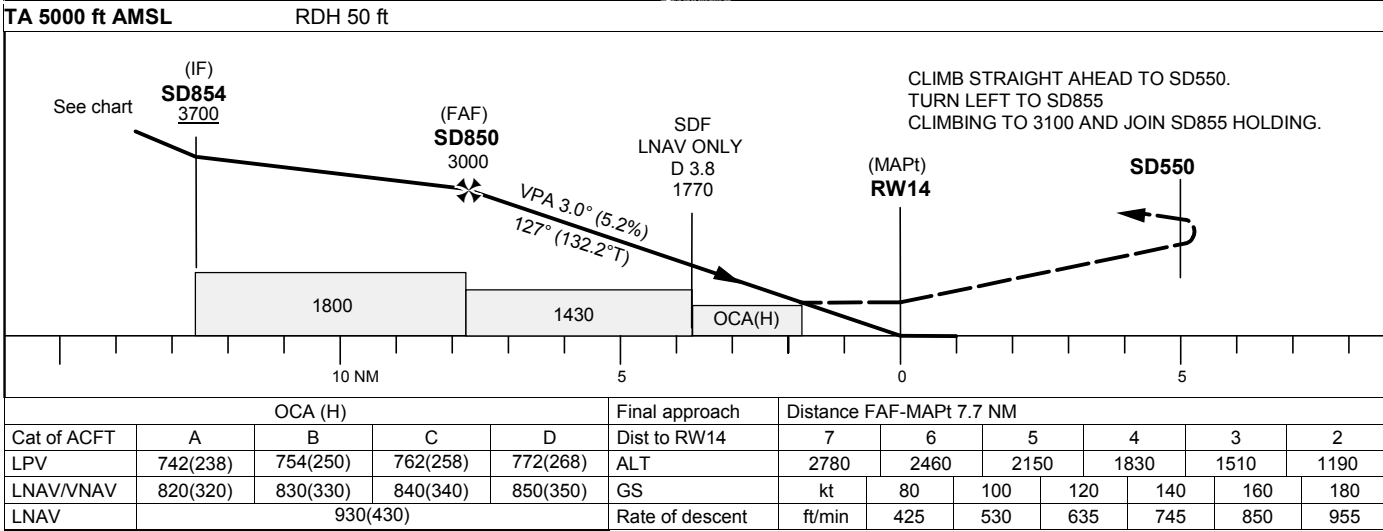
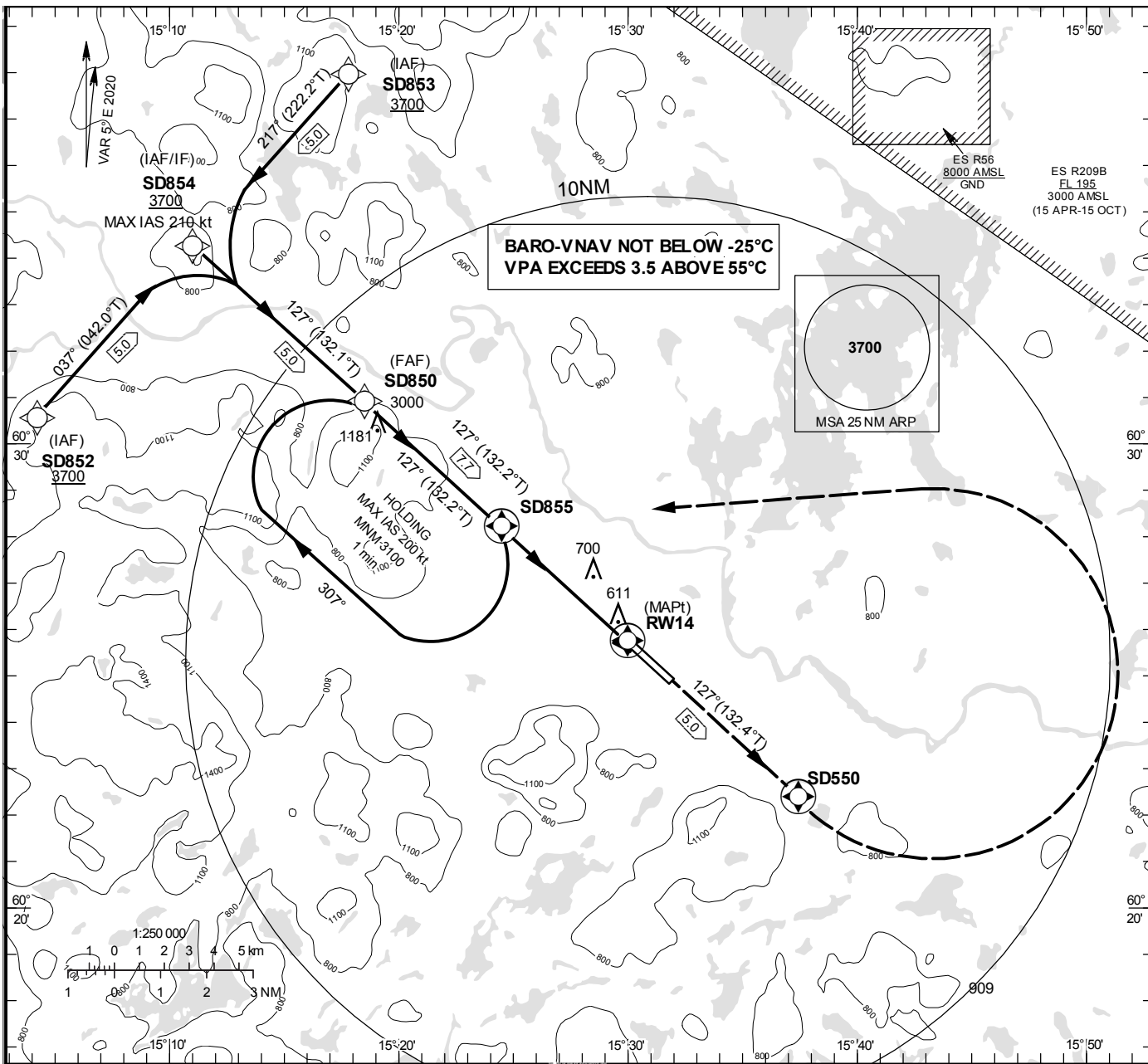


**INSTRUMENT  
APPROACH  
CHART – ICAO**

**THR ELEV 504 ft, AD ELEV 504 ft**  
OCH are related to THR.  
BRG are MAG (True).  
ALT, HGT and ELEV in ft.

**BORLÄNGE TOWER** 127.305



CHANGE: Editorial

**BORLÄNGE****RNP RWY 14 via SD852**

| Path Desc | Waypoint Identifier | Fly-over | Course °M(°T) | Dist (NM) | Turn Dir | Altitude | Speed | VPA/ RDH | Rec Navaid | Navigation Specification |
|-----------|---------------------|----------|---------------|-----------|----------|----------|-------|----------|------------|--------------------------|
| IF        | SD852               | -        | -             | -         | -        | +3700    | -     | -        | -          | RNP APCH                 |
| TF        | SD854               | -        | 037°(042.0°)  | 5.0       | -        | +3700    | -210  | -        | -          | RNP APCH                 |

**RNP RWY 14 via SD853**

| Path Desc | Waypoint Identifier | Fly-over | Course °M(°T) | Dist (NM) | Turn Dir | Altitude | Speed | VPA/ RDH | Rec Navaid | Navigation Specification |
|-----------|---------------------|----------|---------------|-----------|----------|----------|-------|----------|------------|--------------------------|
| IF        | SD853               | -        | -             | -         | -        | +3700    | -     | -        | -          | RNP APCH                 |
| TF        | SD854               | -        | 217°(222.2°)  | 5.0       | -        | +3700    | -210  | -        | -          | RNP APCH                 |

| Path Desc | Waypoint Identifier | Fly-over | Course °M(°T) | Dist (NM) | Turn Dir | Altitude | Speed | VPA/ RDH | Rec Navaid | Navigation Specification |
|-----------|---------------------|----------|---------------|-----------|----------|----------|-------|----------|------------|--------------------------|
| IF        | SD854               | -        | -             | -         | -        | +3700    | -210  | -        | -          | RNP APCH                 |
| TF        | SD850               | -        | 127°(132.1°)  | 5.0       | -        | @3000    | -     | -        | -          | RNP APCH                 |
| TF        | RW14                | Y        | 127°(132.2°)  | 7.7       | -        | @553     | -     | -3.0/50  | -          | RNP APCH                 |
| TF        | SD550               | Y        | 127°(132.4°)  | 5.0       | -        | -        | -     | -        | -          | RNP APCH                 |
| DF        | SD855               | Y        | -             | -         | L        | +3100    | -     | -        | -          | RNP APCH                 |

| Path Desc | Waypoint Identifier | Fly-over | Course °M(°T) | Dist (NM) | Turn Dir | Altitude | Speed | VPA/ RDH | Rec Navaid | Navigation Specification |
|-----------|---------------------|----------|---------------|-----------|----------|----------|-------|----------|------------|--------------------------|
| HM        | SD855               | Y        | 127°(132.2°)  | -         | R        | +3100    | -200  | -        | -          | RNAV 1                   |

## FAS Data Block

## RNP RWY 14

## Input data

|                                     |               |
|-------------------------------------|---------------|
| Operation Type                      | 0             |
| SBAS Provider                       | 1             |
| Airport Identifier                  | ESSD          |
| Runway                              | 14            |
| Runway Direction                    | 0             |
| Approach Performance Designator     | 0             |
| Route Indicator                     |               |
| Reference Path Data Selector        | 0             |
| Reference Path Identifier           | E14A          |
| LTP/FTP Latitude                    | 602544.7300N  |
| LTP/FTP Longitude                   | 0152959.5100E |
| LTP/FTP Ellipsoidal Height (metres) | 182.6         |
| FPAP Latitude                       | 602454.3200N  |
| Delta FPAP Latitude (seconds)       | -50.4100      |
| FPAP Longitude                      | 0153151.0900E |
| Delta FPAP Longitude (seconds)      | 111.5800      |
| Threshold Crossing Height           | 50.0          |
| TCH Units Selector                  | 0             |
| Glidepath Angle (degrees)           | 3.00          |
| Course Width (metres)               | 105.00        |
| Length Offset (metres)              | 0             |
| HAL (metres)                        | 40.0          |
| VAL (metres)                        | 50.0          |

## Output data

|                      |  |
|----------------------|--|
| Data Block           | 10 04 13 13 05 0E 00 00 01 34<br>31 05 34 F0 EE 19 AC DD A6 06<br>22 1B 2C 76 FE B8 67 03 F4 01<br>2C 01 64 00 C8 FA 97 01 86 34 |
| Calculated CRC Value | 97018634   |

## Required Additional Data

|                                     |       |
|-------------------------------------|-------|
| ICAO Code                           | ES    |
| LTP/FTP Orthometric Height (metres) | 153.6 |
| FPAP Orthometric Height (metres)    | 150.3 |